

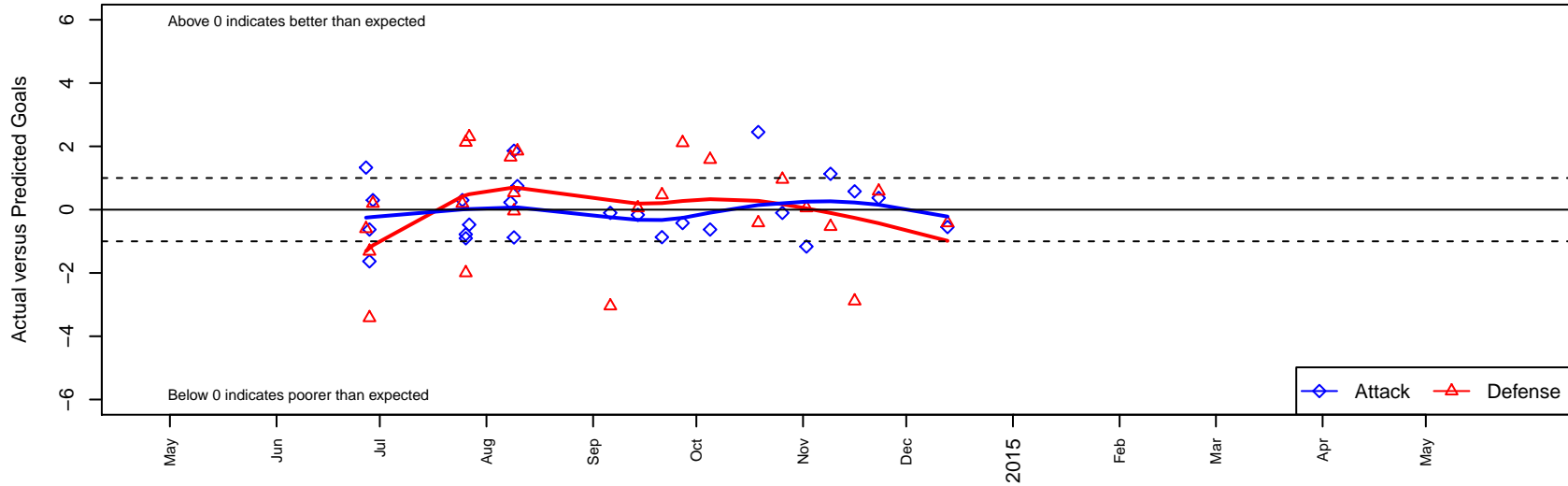
Pacific FC Blue–Dynamos B99

Pacific FC
 Battle Ground, WA
 B99 total strength=1089
 attack=3.36 defense=2.2
 fall league = PSPL Classic 2 U15

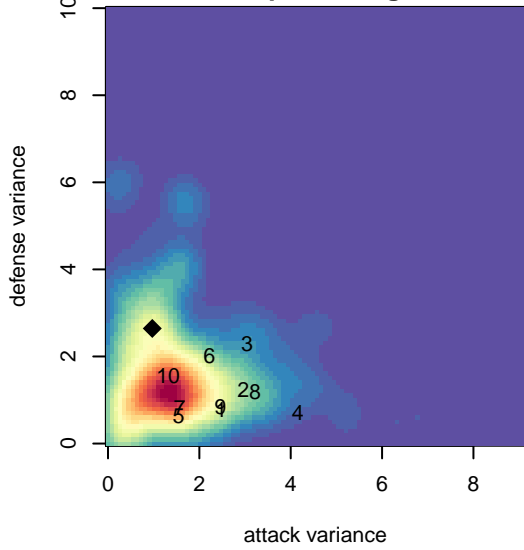
alt names used:
 Pacific FC Dynamos Blue
 Pacific FC B99 Dynamos Blue
 PACIFIC FC DYNAMOS BLUE (WA)
 Pacific FC Dynamos Blue

Venues played:
 2014 Clash At the Border Silver/Bronze U15
 2014 Oswego Nike Cup Silver U15
 2014 Mt Hood Challenge U15
 2014 PSPL Classic 2 U15

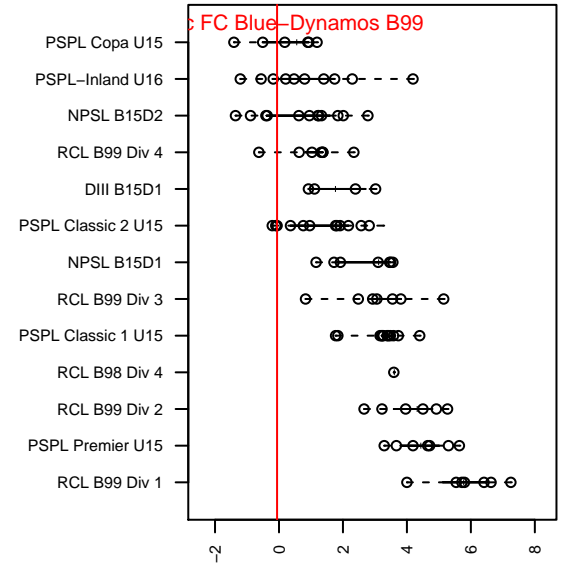
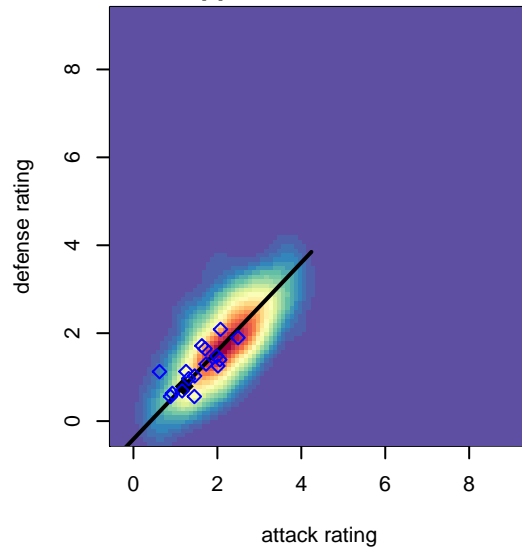
Pacific FC Blue–Dynamos B99
 Dots are actual minus expected GF (blue circles) and GA (red triangles).
 Blue line is smoothed change in attack strength. Red is smoothed change in defense strength.



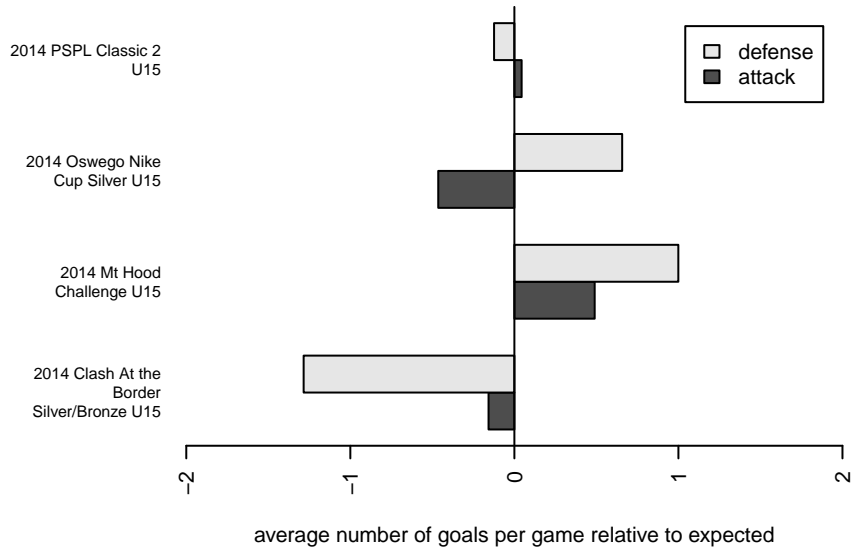
**attack and defense variance (black dot)
relative to other teams
and top 10 in region**



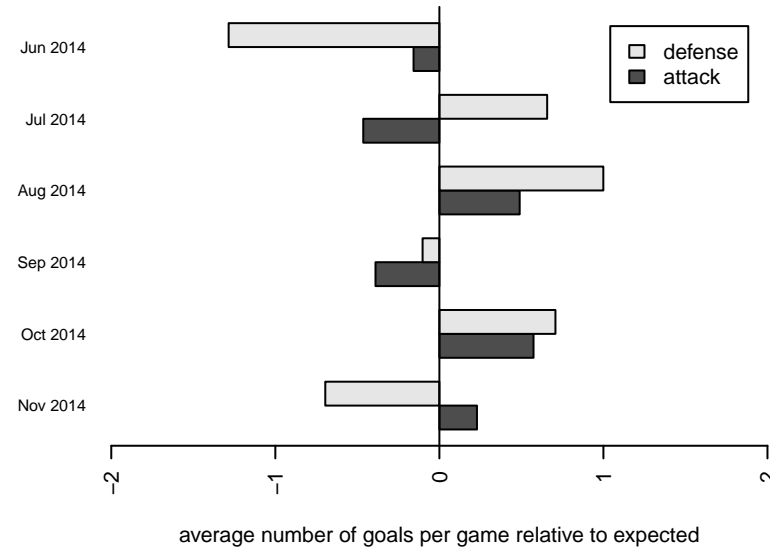
**attack and defense rating
relative to others at age
and all opponents in last 13 months**



Performance relative to 13 month average



Performance relative to 13 month average



| date | home | | away | | venue | pred.home | pred.away |
|------------|---------------------------------|---|---------------------------------|---|--|-----------|-----------|
| 2014-12-13 | Impact FC Black B99 | 3 | Pacific FC Blue-Dynamos B99 | 0 | 2014 PSPL Classic 2 U15 | 2.58 | 0.55 |
| 2014-11-23 | Pacific FC Blue-Dynamos B99 | 2 | Kitsap Pumas 2 B99 | 1 | 2014 PSPL Classic 2 U15 | 1.63 | 1.58 |
| 2014-11-16 | Kent United White B99 | 6 | Pacific FC Blue-Dynamos B99 | 1 | 2014 PSPL Classic 2 U15 | 3.11 | 0.42 |
| 2014-11-09 | MRFC Blue B99 | 4 | Pacific FC Blue-Dynamos B99 | 2 | 2014 PSPL Classic 2 U15 | 3.47 | 0.87 |
| 2014-11-02 | Pacific FC Blue-Dynamos B99 | 0 | MVP Rapids White B99 | 1 | 2014 PSPL Classic 2 U15 | 1.16 | 1.06 |
| 2014-10-26 | Pacific FC Blue-Dynamos B99 | 1 | NK Force B99 | 1 | 2014 PSPL Classic 2 U15 | 1.10 | 1.96 |
| 2014-10-19 | Pacific FC Blue-Dynamos B99 | 3 | Impact FC Black B99 | 3 | 2014 PSPL Classic 2 U15 | 0.55 | 2.58 |
| 2014-10-05 | Kitsap Pumas 2 B99 | 0 | Pacific FC Blue-Dynamos B99 | 1 | 2014 PSPL Classic 2 U15 | 1.58 | 1.63 |
| 2014-09-27 | Pacific FC Blue-Dynamos B99 | 0 | Kent United White B99 | 1 | 2014 PSPL Classic 2 U15 | 0.42 | 3.11 |
| 2014-09-21 | Pacific FC Blue-Dynamos B99 | 0 | MRFC Blue B99 | 3 | 2014 PSPL Classic 2 U15 | 0.87 | 3.47 |
| 2014-09-14 | MVP Rapids White B99 | 1 | Pacific FC Blue-Dynamos B99 | 1 | 2014 PSPL Classic 2 U15 | 1.06 | 1.16 |
| 2014-09-06 | NK Force B99 | 5 | Pacific FC Blue-Dynamos B99 | 1 | 2014 PSPL Classic 2 U15 | 1.96 | 1.10 |
| 2014-08-10 | Pacific FC Blue-Dynamos B99 | 2 | Washington Timbers Crimson B99 | 0 | 2014 Mt Hood Challenge U15 | 1.26 | 1.85 |
| 2014-08-09 | FC Academicos B99 | 2 | Pacific FC Blue-Dynamos B99 | 1 | 2014 Mt Hood Challenge U15 | 1.96 | 1.88 |
| 2014-08-09 | Cascade FC B99 | 1 | Pacific FC Blue-Dynamos B99 | 3 | 2014 Mt Hood Challenge U15 | 1.53 | 1.14 |
| 2014-08-08 | Newport FC Warriors B99 | 1 | Pacific FC Blue-Dynamos B99 | 1 | 2014 Mt Hood Challenge U15 | 2.66 | 0.77 |
| 2014-07-27 | Pacific FC Orange-Dynamos B99 | 3 | Pacific FC Blue-Dynamos B99 | 0 | 2014 Oswego Nike Cup Silver U15 | 5.30 | 0.47 |
| 2014-07-26 | Crossfire Oregon Green II B99 | 0 | Pacific FC Blue-Dynamos B99 | 0 | 2014 Oswego Nike Cup Silver U15 | 2.13 | 0.90 |
| 2014-07-26 | Pacific FC Blue-Dynamos B99 | 0 | FC Portland White B99 | 6 | 2014 Oswego Nike Cup Silver U15 | 0.78 | 4.00 |
| 2014-07-25 | Washington Timbers Burgundy B99 | 1 | Pacific FC Blue-Dynamos B99 | 2 | 2014 Oswego Nike Cup Silver U15 | 1.20 | 1.70 |
| 2014-06-29 | Pacific FC Blue-Dynamos B99 | 2 | Washington Timbers Burgundy B99 | 1 | 2014 Clash At the Border Silver/Bronze U | 1.70 | 1.20 |
| 2014-06-28 | Kitsap Pumas 2 B99 | 5 | Pacific FC Blue-Dynamos B99 | 1 | 2014 Clash At the Border Silver/Bronze U | 1.58 | 1.63 |
| 2014-06-28 | BSC Portland Gold-Tiempo B99 | 3 | Pacific FC Blue-Dynamos B99 | 0 | 2014 Clash At the Border Silver/Bronze U | 1.68 | 1.63 |
| 2014-06-27 | Pacific FC Blue-Dynamos B99 | 2 | Gala FC Red B99 | 3 | 2014 Clash At the Border Silver/Bronze U | 0.67 | 2.40 |